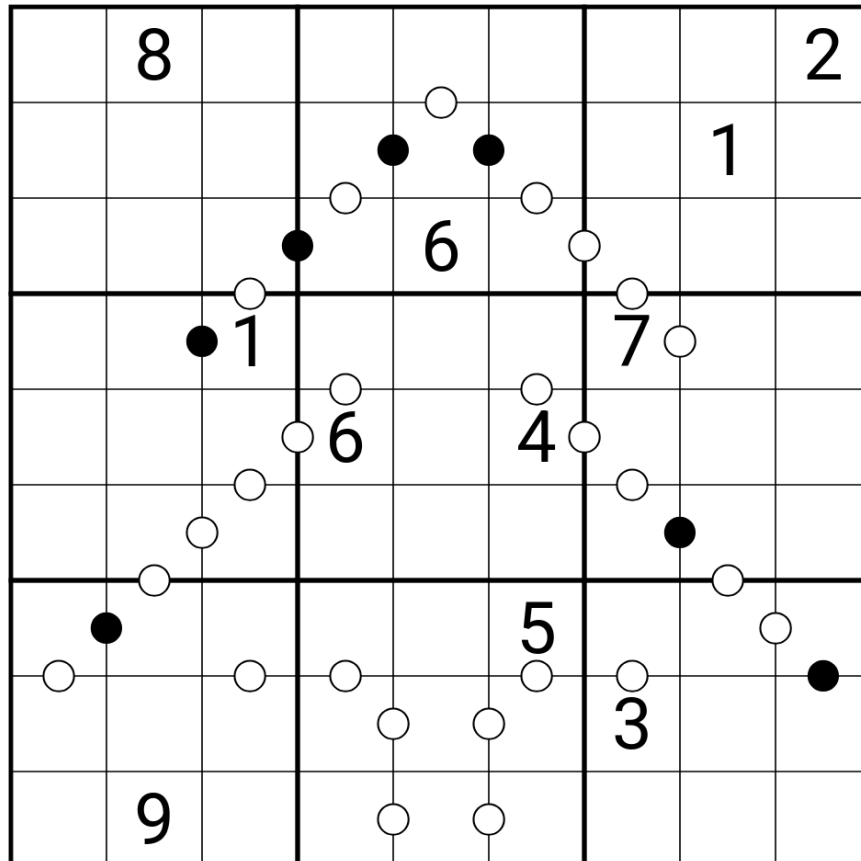


A Christmas Tree Sudoku

This is what's known as a "variant" Sudoku puzzle – the normal rules apply, but this puzzle has two additional rules just to make things more interesting. If you haven't tried variant Sudoku before, you might want to team up with someone else and work on solving this together. Although it may be unfamiliar, it's not especially difficult.



Normal Sudoku Rules:

- Place the digits 1-9 once each in every row, every column and every 3x3 box (within the bold borders).

Additional Rules

- Where two cells are joined by a white dot, the digits in those cells must be consecutive (e.g.: if one cell contains a 7, the other must contain a 6 or an 8).
- Where two cells are joined by a black dot, one of the digits must be double the other (e.g.: if one cell contains a 4, the other must contain either a 2 or an 8).

You can solve the puzzle online at: <https://sudokupad.app/eprzkbxxz4>